



W. Basketball Contacts: Steve Rourke/Liza David
 SID Phone: (310) 206-6831
 Web Page: www.uclabruins.com

DEPARTMENT OF INTERCOLLEGIATE ATHLETICS

For Immediate Release
 August 2008

UCLA WOMEN'S BASKETBALL: 2008-09 PROSPECTUS

2008-09 UCLA W. Basketball Schedule

| Date | Opponent | Tentative Time |
|--|--------------------------------|----------------|
| 11/2 | Exhibition | 2 p.m. |
| 11/9 | Exhibition | 2 p.m. |
| 11/16 | Cal State Fullerton | 2 p.m. |
| 11/18 | Pepperdine | 7 p.m. |
| 11/23 | @ Maryland | TBA |
| 11/26 | @ Cal Poly SLO | 7 p.m. |
| 11/30 | Cal State Northridge | 2 p.m. |
| 12/3 | Cal State Bakersfield | 7 p.m. |
| 12/7 | Nevada | 2 p.m. |
| 12/14 | San Diego | 2 p.m. |
| 12/17 | @ Rice | 5 p.m. |
| 12/21 | Kansas | 2 p.m. |
| 12/29 | @ Texas Tech | TBA |
| 1/2 | Oregon State* | 7 p.m. |
| 1/4 | Oregon* | 2 p.m. |
| 1/11 | USC* | 2 p.m. |
| 1/15 | @ Arizona State* | TBA |
| 1/17 | @ Arizona* | TBA |
| 1/22 | Washington State* | 7 p.m. |
| 1/24 | Washington* | 2 p.m. |
| 1/29 | @ California* | TBA |
| 1/31 | @ Stanford* | TBA |
| 2/8 | @ USC* | TBA |
| 2/12 | Arizona* | 7 p.m. |
| 2/14 | Arizona State* | 2 p.m. |
| 2/20 | @ Washington* | TBA |
| 2/22 | @ Washington State* | TBA |
| 2/27 | Stanford* | 7 p.m. |
| 3/1 | California* | 2 p.m. |
| 3/5 | @ Oregon* | TBA |
| 3/7 | @ Oregon State* | TBA |
| 3/12-15 | State Farm Pac-10 Tourn. @ USC | |
| 3/21-24 | NCAA 1st/2nd Rds. | |
| (Albuquerque, NM; Baton Rouge, LA; Columbus, OH; Duluth, GA; Lubbock, TX; Los Angeles, CA; Piscataway, NJ; College Park, MD) | | |
| 3/28-31 | NCAA Regionals | |
| (Berkeley, CA; Raleigh, NC; Oklahoma City, OK; Trenton, NJ) | | |
| 4/5&7 | NCAA Final Four | |
| (St. Louis, MO) | | |

*Times listed are local to game site and subject to change.

Final '07-08 Pac-10 Standings

| Team | Pac-10 | Overall |
|------------------|--------|---------|
| Stanford | 16-2 | 35-4 |
| California | 15-3 | 27-7 |
| Arizona State | 14-4 | 22-11 |
| USC | 10-8 | 17-13 |
| UCLA | 10-8 | 16-15 |
| Washington | 8-10 | 13-18 |
| Oregon | 7-11 | 14-17 |
| Oregon State | 4-14 | 12-19 |
| Arizona | 4-14 | 10-20 |
| Washington State | 2-16 | 5-25 |

Caldwell Era Begins; Bruins Return 10 for 2008-09, Add Two Top Recruits— On April 17, 2008 UCLA announced the hiring of Nikki Caldwell as head women's basketball coach. Caldwell joined the Bruins after serving as an assistant coach at the University of Tennessee for the past six seasons, including the last two National Championship campaigns in 2007 and 2008. In her 14 seasons as a collegiate player (1991-1994 at Tennessee) and assistant coach (Tennessee 1999, Virginia 2000-2002, Tennessee 2003-2008), Caldwell's teams have posted an amazing 404-76 record and appeared in the NCAA Tournament each season, while winning three national championships.

Caldwell welcomes back 10 returning letterwinners for the 2008-09 season, including four starters. In fact, eight of the 10 returners started games last season, and they combined for a total of 109 starts a year ago.

The Bruins added two recruits signed in the early period, 5-11 guard/forward Atonye Nyingifa from Redondo Union HS and 5-10 guard Rebekah Gardner from Ayala HS.

UCLA Returning Starters (# '07-08 starts/career starts) —

| No. | Name (starts in '07-08/career starts) | Pos. | Ht. | Cl. | PPG | RPG |
|-----|--|------|------|-----|-----|-----|
| 1 | Nina Earl (15/15) | F | 6-1 | So. | 8.7 | 3.4 |
| 13 | Erica Tukiainen (22/22/63 career g) | G | 6-0 | Jr. | 4.6 | 2.1 |
| 21 | Doreena Campbell (30/30) | G | 5-10 | So. | 8.7 | 4.2 |
| 31 | Moniquee Alexander (15/15/61 career g) | C | 6-6 | Jr. | 3.8 | 3.1 |

Off The Bench

| No. | Name ('07-08 gp/career gs/career gp) | Pos. | Ht. | Cl. | PPG | RPG |
|-----|--------------------------------------|------|------|-----|-----|-----|
| 2 | Tierra Henderson (31/41/95) | G | 5-10 | Sr. | 7.6 | 3.3 |
| 3 | Darxia Morris (28/12/28) | G | 5-8 | So. | 7.5 | 2.1 |
| 4 | Christina Nzekwe (31/0/31) | F | 6-4 | So. | 3.0 | 3.1 |
| 10 | Allison Taka (5/0/13) | G | 5-8 | Jr. | 0.2 | 0.2 |
| 23 | Chinyere Ibekwe (28/35/92) | C | 6-4 | Sr. | 2.7 | 3.8 |
| 24 | Candice Brown (26/2/26) | F | 6-4 | So. | 1.5 | 2.2 |

Incoming Freshmen

| No. | Name (HS Senior ppg/ rpg) | Pos. | Ht. | Cl. | High School (Hometown) |
|-----|-------------------------------|------|------|-----|---------------------------------|
| 35 | Rebekah Gardner (19.7p/ 8.1r) | G | 5-10 | Fr. | Ayala HS (Fontana, CA) |
| 50 | Atonye Nyingifa (21.1p/12.2r) | G/F | 5-11 | Fr. | Redondo Union HS (Torrance, CA) |

Not Returning

| No. | Name ('07-08 gp/career gs/ career gp) | Pos. | Ht. | Cl. | PPG | RPG |
|-----|---------------------------------------|------|-----|-----|------|-----|
| 5 | Alexis Olivier (4/0/7) | G | 5-8 | So. | 0.5 | 0.0 |
| 14 | Lindsey Pluimer (31/123/123) | F | 6-4 | Sr. | 15.5 | 5.7 |
| 34 | Regina Rogers (31/15/31) | F/C | 6-4 | Fr. | 6.3 | 4.6 |

What's Returning for 2007-08 — The Bruins return 70% of games started (109/155), 77% of the minutes played (4763/6225), 70% of the field goals made (547/786), 64% of the three-point field goals made (61/96), 70% of the rebounds (811/1155), 83% of the assists (333/401), 49% of the blocked shots (50 of 102), 88% of the steals (278/317), 70% of the points scored (1,448/2,083).

New Staff In Place — Coach Caldwell has assembled an impressive staff featuring **Stacie Terry, Tony Perotti and Tasha Butts**.

Terry coached last season at the University of Southern Mississippi. She worked primarily with the perimeter players, and her responsibilities included recruiting coordinator, opponent scouting and film breakdown, assisting with summer camps, as well as coordinating all of the team's community service events. Terry has also been an assistant at the University of Illinois, Dayton and Louisville.

Perotti comes to UCLA from Northern Arizona University, where he spent the last four seasons as an assistant. The past two years he was associate head coach. Perotti served primarily as the team's recruiting coordinator, game scouting coordinator and in the development of perimeter players. Perotti also has been an assistant at the University of San Francisco. He is a graduate of the University of Tennessee, where he worked summer camps for the Lady Vols.

Butts, a standout player at the University of Tennessee (2001-04) and then in the WNBA, came West from Duquesne University (Pittsburgh, PA), where she was an assistant coach in 2007-08.

In addition, **Pam Walker** will continue on staff as the Director of Operations after serving as a Bruin assistant coach for the past 15 seasons.

Making the Grade — Three returning members of the Bruin squad made the UCLA Athletic Director's Honor Roll (3.0 or better with at least 12 graded units) in the 2007 Fall Quarter (**Allison Taka**, **Doreena Campbell**, **Christina Nzekwe**). Taka earned a gpa of 3.5 or above during all three quarters last year. **Erica Tukiainen** and Taka made the 2008 Spring Athletic Director's Honor Roll.

All-Conference Honors — Guard **Doreena Campbell** was selected to the first-team All-Pac-10 Freshman team and also earned honorable mention All-Conference honors. Guard **Tierra Henderson** was named to the first-team All-Pac-10 Defensive team. Forward **Nina Earl** and guard **Darxia Morris** each earned honorable mention All-Freshman team accolades as well as honorable mention All-Defensive team honors.

Bruin Pac-10 Notes — With their fourth-place (tie) conference finish in 2007-08, the Bruins earned their seventh top-four conference finish in the last 11 seasons. Only Stanford, with 11 top-four finishes, has achieved a higher level of success in that period. Arizona State also has seven such finishes.

UCLA's 10 Pac-10 conference wins marked the fourth time in the last five seasons in which it had posted double-digit victories in conference play.

Fresh Notes — UCLA had four returning freshmen average in double figure minutes last season (**Doreena Campbell** - 30.8; **Nina Earl** - 24.2; **Darxia Morris** - 19.9; **Christina Nzekwe** - 12.6). As many as three freshmen were in the starting lineup for 12 games in 2007-08 and posted a 6-6 record in those contests.

2007-08 Season Notes — UCLA limited the opposition to a shooting percentage of .382, which ranked as the third-lowest mark in Bruin opponent history. During the season, UCLA held nine straight opponents to 65 points or less in regulation (UC Riverside 60, at Arizona State 62, at Arizona 59, Stanford 56, California 65, at Washington 57, at Washington State 56, at USC 64, Oregon 59).

UCLA's Jan. 4, 2008 win over No. 2-ranked Stanford marked the first time the Bruin program has defeated a team ranked higher than fourth in the Associated Press poll at the time of the contest.

For the Record — UCLA won all 14 games during the 2007-08 season in which it led at the half. The Bruins were 9-1 in games in which they limited the opponent to less than 60 points. UCLA was 13-4 in games in which it outshot the opponent and 14-2 in games in which it led with five minutes left to play.

Pac-10 Ranked Bruins — **Doreena Campbell** ranked eighth in the conference in assists (3.37), fourth in assist/turnover ratio (1.68), and 17th in minutes (30.83). **Tierra Henderson** tied for third in the league in steals (2.00). **Darxia Morris** was ninth in steals (1.64). **Nina Earl** ranked 20th in scoring (8.7).

In league games only, Campbell ranked ninth in assists (3.47), 10th in assist/turnover ratio (1.40), 10th in steals (1.47) and 11th in minutes (31.71). Henderson was listed third in steals (2.06) and 10th in field goal percentage (.441). Earl rated eighth in steals (1.67).

Bruin Pac-10 Team Ranking Highlights — The Bruin team ranked first in the conference in rebounding offense (42.2), offensive rebounds (14.32) and steals (10.23); second in scoring (67.2) and defensive rebounds (27.90). UCLA was third in field goal percentage defense (.382), rebounding margin (+2.4), turnover margin (+0.90) and blocked shots (3.29).

Impressive Incoming Freshmen — UCLA welcomes **Atonye Nyingifa** of Redondo Union HS in Redondo Beach, CA and **Rebekah Gardner** of Ayala HS in Chino Hills, CA to Westwood for the 2008-09 season. The signing of Nyingifa and Gardner last fall gave UCLA the No. 12 overall recruiting class by HoopGurlz.com.

Both players were named as Sporting News HS All-Americans and were ranked as Top 75 prospects by HoopGurlz.com with Nyingifa at No. 19 and Gardner at No. 66. One California prep rating service listed them both among the Top 5 prospects in the state. Each player was named their division's CIF Player of the Year this past season.

Listed Bruins —

- **Doreena Campbell's** 101 assists in 2008 ranked as the sixth-best total ever by a Bruin freshman

- **Campbell's** three-point shooting percentage of .434 is the second-highest ever by a Bruin freshman and the third-highest in school history (min. 20 made)

- The team total of 102 blocked shots was the second-most in school history

- The opponent scoring average of 66.3 points was the fourth-lowest in school history

- The opponent shooting percentage of .382 was the third-lowest in school history

- The crowd of 8,103 fans which witnessed the USC game in Pauley Pavilion (Feb. 17, 2008) was the fourth-largest in school history.

UCLA Quick Facts

General Information

Mailing Address:..... UCLA Athletic Department
..... P.O. Box 24044
..... Los Angeles, CA 90024-0044
Founded: 1919
Enrollment: 37,000
Chancellor:..... Dr. Gene Block
Athletics Director:..... Daniel Guerrero
Sr. Women's Administrator:..... Petrina Long
Conference: Pacific-10
Nickname: Bruins
Colors: Blue and Gold
Home Court: (Cap.): Pauley Pavilion (12,819)
Athletics Dept. Phone:..... (310) 825-8699
Ticket Office Phone:..... (310) UCLA-WIN
Official School Website:..... www.uclabruins.com

Women's Basketball Coaching Staff

Head Coach: Nikki Caldwell (1st season)
Alma Mater:..... Tennessee, 1994
Record at UCLA:..... 1st season
Asst. Coaches:..... Tasha Butts (Tennessee, 2004) 1st season,
..... Tony Perotti (Tennessee, 1999) 1st season,
..... Stacie Terry (Texas-Arlington, 1998) 1st season
Dir. of Basketball Operations Pam Walker (UCLA 1985)
Basketball Office Phone:..... (310) 206-1925

2007-08 Season Numbers

Record: 16-15/ 10-8 (t-4th in Pac-10)
Starters Returning / Lost:..... 4/1
Letterwinners Returning / Lost:..... 10/3
Newcomers:..... 2
Post-Season: none
Final National Ranking: none

Class Breakdown

Seniors: (2) Tierra Henderson, 5-10, G
..... Chinyere Ibekwe, 6-4, C
Juniors: (3) Moniquee Alexander, 6-6, C
..... Allison Taka, 5-8, G
..... Erica Tukiainen, 6-0, G
Sophomores: (5) Candice Brown, 6-4, F/C
..... Doreena Campbell, 5-10, G
..... Nina Earl, 6-1, F
..... Darxia Morris, 5-9, G
..... Christina Nzekwe, 6-4, F/C
Freshmen: (2) Rebekah Gardner, 5-10, G
..... Atonye Nyingifa, 5-11 G/F

Sports Information

Contact 1: Steve Rourke
Office Phone:..... (310) 206-8187
Email: srouke@athletics.ucla.edu
Contact 2: Liza David
Office Phone:..... (310) 206-8140
Email: ldavid@athletics.ucla.edu
Office Fax: (310) 825-8664
Press Row Phone:..... (310) 825-1899

UCLA Basketball History

First Basketball Season: 1974-75 (34 seasons)
All-Time Record:..... 585-400
NCAA Appearances / last appearance: Nine / 2006

Media Information

Station UCLABruins.com
Play-by-play announcer:..... Dave Marcus
Color commentator:..... Michael Sondheimer

RETURNING PLAYER BIOGRAPHIES



#1 Nina Earl

Forward • Sophomore • 6-1 • Pomona, CA (Diamond Ranch HS)

2007-08 — Starter in 13 of the last 19 games of the season and in 15 overall ... Scored in double digits 11 times and set career-bests when she recorded her first double-double at Arizona (23 points and 10 rebounds) ... Ranked 20th in the Pac-10 in scoring ... Earned honorable mention All-Pac-10 Freshman and All-Pac-10 Defensive team recognition ... Scored 17 in the home win over Arizona ... Tied for team-high scoring honors with 12 points vs. Arizona State (h) ... Led the team with 18 points at Washington State ... Tied for the team lead with 13 points at BYU ... Scored a team-high 12 points at San Diego ... Made her first career start against Cal Poly SLO and scored 17 points ... Totaled 13 points in her first collegiate game at Cal State Northridge.

Career Highs: Pts. 23 at Arizona, 12/30/07; Reb. 10 at Arizona, 12/30/07; Asst. 4 vs. Oregon State, 1/26/08; Stl. 4, last v. USC, 3/8/08; Blk. 1, last vs. Washington State, 2/8/08.

UCLA Career Statistics

| Year | G-Gs | Min/Avg | Fg-Fga | Pct. | Ft-Att. | Pct. | Reb./Avg. | A | B | St | TP | Avg |
|--------|-------|----------|---------|------|---------|------|-----------|----|---|----|-----|-----|
| 07-08 | 31-15 | 749/24.2 | 106-251 | .422 | 52-96 | .542 | 105/3.4 | 39 | 5 | 47 | 271 | 8.7 |
| Pac-10 | 18-13 | 461/25.6 | 56-146 | .384 | 32-54 | .593 | 67/3.7 | 24 | 3 | 30 | 147 | 8.2 |

3-point Shooting: 2008: 7-28, (.250).



#2 Tierra Henderson

Guard • Senior • 5-10 • Pasadena, CA (Muir HS)

2007-08 — Selected to the first-team All-Pac-10 Defensive team ... Ranked tied for third in the Pac-10 in steals per game (2.00) ... Scored in double figures in seven games ... Led the team in scoring in three games ... Led the team in rebounding in two games ... Tied career best with seven assists vs. Arizona ... Tied for team-best scoring honors with 12 points vs. Arizona State ... Scored 10 and hit key free throw to help Bruins win at Oregon State ... Led team with seven points vs. USC ... Scored career-high 16 points vs. Oregon State ... Scored 12 points at USC ... Tied career-high with seven steals at Arizona ... Tied for team-high honors with 15 points at Pepperdine.

2006-07 — Starter in 31 of the 32 games ... Scored at least eight points in nine games ... Had five double digit scoring games with a career-best of 11 points at Cal State Fullerton ... Credited with at least three assists in 15 games ... Handed out a career-best seven assists versus Washington State ... Registered at least two steals in 16 games ... Had a career-high seven steals versus Gonzaga ... Played at least 20 minutes in 28 games ... Ranked fourth in the Pac-10 in steals (2.09) ... Averaged 6.3 points (69), 4.3 rebounds (47) and 3.8 (42) assists over the last 11 games of the season ... Scored 10 at Oregon State ... Had 10 points, seven assists (career-high) vs. Washington State ... Scored 10 vs. Washington ... Scored 10 at home vs. Cal ... Had eight points, eight rebounds and seven steals vs. Gonzaga.

2005-06 — Saw action in all 32 games off the bench ... Played at least 10 minutes in 16 games ... Played a season-high 19 minutes vs. Arizona State ... Had a season-high total of four points in four games ... Had three steals in a game at Washington ... Handed out a season-best two assists at Arizona.

Career Highs: Pts. 16 vs. Oregon State, 1/26/08; Reb. 8 v. Gonzaga, 11/24/06; Asst. 7 v. Arizona, 3/1/08; Stls. 7, last at Arizona, 12/30/07; Blk. 1 vs. Cal Poly SLO, 11/20/07.

UCLA Career Statistics

| Year | G-Gs | Min/Avg | Fg-Fga | Pct. | Ft-A | Pct. | Reb./Avg. | A | B | St | TP | Avg |
|---------------|--------------|------------------|----------------|-------------|---------------|-------------|----------------|------------|----------|------------|------------|------------|
| 07-08 | 31-10 | 747/24.1 | 95-227 | .419 | 35-64 | .547 | 102/3.3 | 58 | 1 | 62 | 237 | 7.6 |
| 06-07 | 32-31 | 811/25.3 | 64-190 | .337 | 24-45 | .533 | 116/3.6 | 89 | 3 | 67 | 164 | 5.1 |
| 05-06 | 32-0 | 313/9.8 | 14-34 | .412 | 8-28 | .286 | 44/1.4 | 7 | 0 | 17 | 36 | 1.1 |
| Totals | 95-41 | 1871/19.7 | 173-451 | .384 | 67-137 | .489 | 262/2.8 | 154 | 4 | 146 | 437 | 4.6 |
| Pac-10 | 54-20 | 1101/20.4 | 107-265 | .404 | 44-89 | .494 | 148/2.7 | 91 | 3 | 82 | 276 | 5.1 |

3-point Shooting: 2008: 12-54 (.222); 2007: 12-43 (.279); 2006: 0-2 (.000); Totals 24-99 (.240).

2008-09 UCLA Women's Basketball Roster

| No | Name | Pos | Ht | Yr | Exp. | Hometown (High School) | Pronunciation |
|----|--------------------|-----|------|-----|------|--|--------------------------|
| 1 | Nina Earl | F | 6-1 | So. | 1V | Pomona, CA (Diamond Ranch HS) | KNEE-nah |
| 2 | Tierra Henderson | G | 5-10 | Sr. | 3V | Pasadena, CA (Muir HS) | tee-AIR-uh |
| 3 | Darxia Morris | G | 5-9 | So. | 1V | Pasadena, CA (Muir HS) | Dar-EX-ia |
| 4 | Christina Nzekwe | F/C | 6-4 | So. | 1V | Seattle, WA (Chief Sealth HS) | na-ZECK-way |
| 10 | Allison Taka | G | 5-8 | Jr. | 2V | Culver City, CA (Culver City HS) | TOCK-a |
| 13 | Erica Tukiainen | G/F | 6-0 | Jr. | 2V | Los Angeles, CA (Windward HS) | two-key-EYE-nen |
| 21 | Doreena Campbell | G | 5-10 | So. | 1V | Alexandria, VA (Edison HS) | |
| 23 | Chinyere Ibekwe | F/C | 6-4 | Sr. | 3V | Los Angeles, CA (Carson HS) | chin-YAIR-eh ib-BECK-way |
| 24 | Candice Brown | F/C | 6-4 | So. | 1V | LaPuente, CA (Bishop Amat HS) | |
| 31 | Moniquee Alexander | C | 6-6 | Jr. | 2V | Harbor City, CA (Edison Academic Center) | Mo-KNEE-ck |
| 35 | Rebekah Gardner | G | 5-10 | Fr. | HS | Fontana, CA (Ayala HS) | |
| 50 | Atonye Nyngifa | G/F | 5-11 | Fr. | HS | Torrance, CA (Redondo Union HS) | |

Head Coach: Nikki Caldwell (Tennessee '94)

Asst. Coaches: Stacie Terry (Texas-Arlington '98), Tony Perotti (Tennessee '99), Tasha Butts (Tennessee '04)

Dir. of Ops.: Pam Walker (UCLA '85)

RETURNING PLAYER BIOGRAPHIES



#3 Darxia Morris

Guard • Sophomore • 5-9 • Pasadena, CA (Muir HS)

2007-08 — Starter in 12 games ... Named to the honorable mention All-Pac-10 Freshman and All-Pac-10 Defensive teams ... Ranked ninth in the Pac-10 in steals (1.64) ... Scored a team-high 19 points in Pac-10 Tournament win over USC ... Scored team-best 20 points in win over No. 2-ranked Stanford ... Led team with 14 points at Arizona State ... Had 12 points in start vs. Tennessee ... Led all players with career-best 21 points versus Cal Poly SLO ... Scored 12 in her first collegiate game at Cal State Northridge.

Career Highs: Pts. 21 vs. Cal Poly SLO, 11/20/07; Reb. 6 vs. UC Riverside, 12/21/07; Asst. 5, last vs. Washington, 2/10/08; Stl. 6 at Arizona, 12/30/07; Blk. 1, last at Arizona, 12/30/07.

UCLA Career Statistics

| Year | G-Gs | Min/Avg | Fg-Fga | Pct. | Ft-Att. | Pct. | Reb./Avg. | A | B | St | TP | Avg |
|--------|-------|----------|--------|------|---------|------|-----------|----|---|----|-----|-----|
| 07-08 | 28-12 | 558/19.9 | 82-205 | .400 | 42-66 | .636 | 60/2.1 | 66 | 6 | 46 | 209 | 7.5 |
| Pac-10 | 15-4 | 269/17.9 | 37-94 | .394 | 20-32 | .625 | 30/2.0 | 30 | 3 | 21 | 94 | 6.3 |

3-point Shooting: 2008: 3-17, (.176).



#4 Christina Nzekwe

Forward/Center • Sophomore • 6-4 • Seattle, WA (Chief Sealth HS)

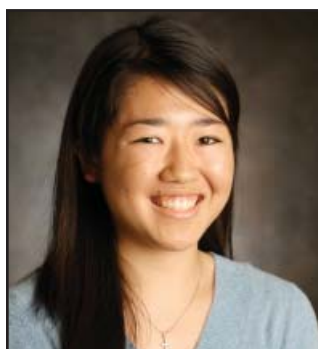
2007-08 — Played in double figure minutes in 25 of the 31 games she played in ... Netted 16 of her last 22 free throw attempts on the season (73%) ... Had eight points, seven rebounds and four steals in helping Bruins to big win at Washington ... Scored eight at BYU ... Tied for team lead with eight rebounds versus Cal Poly SLO ... Named to the Director's Honor Roll for fall quarter.

Career Highs: Pts. 8 at Washington, 1/10/08; Reb. 8 vs. Cal Poly SLO, 11/20/07; Asst. 2, last vs. Arizona, 3/11/08; Stl. 4 at Washington, 1/10/08; Blk. 1, last vs. Stanford, 3/9/08.

UCLA Career Statistics

| Year | G-Gs | Min/Avg | Fg-Fga | Pct. | Ft-Att. | Pct. | Reb./Avg. | A | B | St | TP | Avg |
|--------|------|----------|--------|------|---------|------|-----------|----|----|----|----|-----|
| 07-08 | 31-0 | 392/12.6 | 30-87 | .345 | 34-52 | .654 | 95/3.1 | 12 | 11 | 24 | 94 | 3.0 |
| Pac-10 | 18-0 | 205/11.4 | 13-42 | .310 | 22-33 | .667 | 46/2.6 | 5 | 5 | 12 | 48 | 2.7 |

3-point Shooting: 2008: 0-2, (.000).



#10 Allison Taka

Guard • Junior • 5-8 • Culver City, CA (Culver City HS)

2007-08 — Appeared in five games ... Had two assists in Pac-10 Tournament game vs. USC ... Handed out three assists at Washington State ... Recorded her first steals vs. Cal Poly SLO ... UCLA Athletic Director's Honor Roll student.

2006-07 — Saw action in eight games ... Scored two vs. Washington State in the Conf. Tournament game ... Had one assist at UCI ... Scored her first career points vs. Gonzaga ... Had one assist at UC Riverside.

Career Highs: Pts. 2, last vs. Wash. St., 3/2/07; Reb. 1, vs. UCSB, 11/12/06; Asst. 3 at Washington State, 1/14/08; Stl. 1 vs. Cal Poly SLO, 11/20/07.

UCLA Career Statistics

| Year | G-Gs | Min/Avg | Fg-Fga | Pct. | Ft-A | Pct. | Reb./Avg. | A | B | St | TP | Avg |
|---------------|-------------|---------------|------------|-------------|------------|-------------|--------------|----------|----------|----------|----------|------------|
| 07-08 | 5-0 | 28/5.6 | 0-2 | .000 | 1-4 | .250 | 1/0.2 | 6 | 0 | 2 | 1 | 0.2 |
| 06-07 | 8-0 | 26/3.3 | 0-3 | .000 | 4-4 | 1.000 | 1/0.1 | 2 | 0 | 0 | 4 | 0.5 |
| Totals | 13-0 | 54/4.2 | 0-5 | .000 | 5-8 | .625 | 2/0.2 | 8 | 0 | 2 | 5 | 0.4 |
| Pac-10 | 2-0 | 10/5.0 | 0-0 | .000 | 0-0 | .000 | 1/0.5 | 3 | 0 | 0 | 0 | 0.0 |

3-point Shooting: 2008: 0-0, (.000); 2007: 0-3 (.000); Total: 0-3 (.000).



#13 Erica Tukiainen

Guard • Junior • 6-0 • Los Angeles, CA (Windward HS)

2007-08 — Appeared in 31 games with 22 starts ... Saw action for double figure minutes in 26 games ... Started 15 of the final 16 games of the season ... Had 22 games with one turnover or less ... Scored 89 points in the last 15 games (5.9 avg.) ... Named honorable mention Pac-10 All-Academic ... Scored 11 points at Stanford ... Tied her career best with 12 points at Washington State ... Tied her career high with four assists at Arizona ... Made first career start at Cal State Northridge and scored 10 points and grabbed a career-high nine rebounds ... UCLA Athletic Director's Honor Roll.

2006-07 — Changed her last name over the summer from Latimer to Tukiainen (her mother's name) ... Saw action in all 32 games ... Hit 11 of 27 shots from three-point range (.407) ... Had two double-digit scoring games (12 vs. Cal and 11 vs. USC) ... Made multiple three-pointers in three contests ... Played at least 10 minutes in 17 games ... Scored at least seven points in seven games ... Had seven points vs. Arizona ... Totaled 11 points at home vs. USC ... Scored nine vs. Washington ... Her 12 points keyed a comeback win at home over Cal.

Career Highs: Pts. 12, last at Washington State, 1/14/08; Reb. 9 at CS Northridge, 11/14/07; Asst. 4, last at Arizona, 12/30/07; Stl. 3 vs. Southern, 12/2/07; Blk. 1, last at Oregon State, 2/21/08.

UCLA Career Statistics

| Year | G-Gs | Min/Avg | Fg-Fga | Pct. | Ft-A | Pct. | Reb./Avg. | A | B | St | TP | Avg |
|---------------|--------------|-----------------|---------------|-------------|--------------|-------------|----------------|-----------|----------|-----------|------------|------------|
| 07-08 | 31-22 | 490/15.8 | 47-135 | .348 | 33-44 | .750 | 64/2.1 | 28 | 2 | 17 | 143 | 4.6 |
| 06-07 | 32-0 | 344/10.8 | 32-87 | .368 | 13-29 | .448 | 39/1.2 | 14 | 3 | 15 | 88 | 2.8 |
| Totals | 63-22 | 834/13.2 | 79-222 | .356 | 46-73 | .630 | 103/1.6 | 42 | 5 | 32 | 231 | 3.7 |
| Pac-10 | 36-14 | 497/13.8 | 47-136 | .346 | 34-55 | .618 | 52/1.4 | 24 | 3 | 17 | 147 | 4.1 |

3-point Shooting: 2008: 11-32, (.344); 2007: 11-27, (.407); Total: 22-59, (.373).

RETURNING PLAYER BIOGRAPHIES



#21 Doreena Campbell

Guard • Sophomore • 5-10 • Alexandria, VA (Edison HS)

2007-08 — Started all 30 games in which she played ... Earned honorable mention All-Pac-10 Conference honors ... Named to the first-team All-Pac-10 Freshman team ... Ranked fourth in the Pac-10 in assist / turnover ratio (1.68) ... Eighth in the conference in assists (3.37) ... Led the team in assists with 101 which ranked as the sixth-highest total ever by a Bruin freshman ... Scored in double figures in 13 games ... Had five games with no turnovers and six with one ... Converted 36 of her last 44 free throws (82%) ... Played at least 30 minutes in 20 games ... Her three-point shooting percentage (.434) is the second-highest ever by a Bruin freshman and the third-highest in school history (min. 20 made) ... Scored 13 points in Pac-10 Tournament win over USC ... Scored 12 points on career-best four three-point shots versus Arizona ... Tied career-best with eight rebounds at Oregon ... Scored 13 versus Washington ... Led team with 10 points at California ... Had career-high eight rebounds at Washington ... Handed out career-high eight assists at Arizona State ... Scored career-best 15 points versus Maryland ... Led team with 14 points vs. Rice ... Started her first career game at CS Northridge and scored 14 points ... UCLA Athletic Director's Honor Roll.

Career Highs: Pts. 15 vs. Maryland, 11/25/07; Reb. 8, last at Oregon, 2/23/08; Asst. 8 at Arizona State, 12/28/07; Stl. 7 at CS Northridge, 11/14/07; Blk. 2 vs. Idaho State, 12/1/07.

UCLA Career Statistics

| Year | G-Gs | Min/Avg | Fg-Fga | Pct. | Ft-Att. | Pct. | Reb./Avg. | A | B | St | TP | Avg |
|--------|-------|----------|---------|------|---------|------|-----------|-----|---|----|-----|-----|
| 07-08 | 30-30 | 925/30.8 | 101-238 | .424 | 37-48 | .771 | 127/4.2 | 101 | 4 | 47 | 262 | 8.7 |
| Pac-10 | 17-17 | 539/31.7 | 54-134 | .403 | 24-30 | .800 | 80/4.7 | 59 | 0 | 25 | 143 | 8.4 |

3-point Shooting: 2008: 23-53, (.434).



#23 Chinyere Ibekwe

Center/Forward • Senior • 6-4 • Los Angeles, CA (Carson HS)

2007-08 — Appeared in 28 games with three starts ... Led the team in rebounds in four games ... Pulled down 69 rebounds in the last 15 games (4.6 avg.) ... Played double figure minutes in 10 of the last 15 contests ... Tied for team lead with five rebounds at Oregon State ... Had seven rebounds to tie for game-high honors versus Washington ... Scored season-high nine points at Stanford ... Led team with nine boards at California ... Led team with eight rebounds and had eight points at USC ... Scored eight points vs. Stanford ... Scored six vs. Tennessee.

2006-07 — Made her first career start in the opener against UC Santa Barbara and went on to start all 32 games ... Recorded eight double figure scoring games and six double figure rebound games ... Had double-doubles against Gonzaga (21p, 11r) and Cal (13p, 12 r) ... Scored at last seven points in 17 games ... The 21 points scored versus Gonzaga was a career-best total ... Pulled down a career-best 13 boards at Arizona State ... Had a least eight rebounds in 12 games ... Registered multiple blocked shots in six contests ... Ranked sixth in the conference in offensive rebounds (2.78) and 11th in rebounding (6.6) ... Her 212 rebounds ranked tied for eighth on the all-time UCLA list for sophomores ... Her 24 blocked shots ranked fifth on the school sophomore list ... Had 16 points and a team-high seven rebounds in the Pac-10 tournament versus Arizona State ... Pulled down game-high 11 rebounds at home vs. Arizona State ... Led team with eight rebounds at USC ... Led all players with a career-high 13 rebounds at Arizona State ... Scored 16 vs. USC ... Led team with a 12-rebound effort and added 13 points vs. Cal ... Scored 18 at CS Fullerton ... Had first career double-double with 21 points and 11 rebounds vs. Gonzaga.

2005-06 — Played in all 32 games ... Saw at least 10 minutes of action in 23 contests ... Scored in double-digits in three games ... Had eight points, four rebounds and blocked shot in Pac-10 Championship win over Stanford ... Hit two big free throws with 27 seconds remaining to help clinch win over Cardinal ... Scored 10 and grabbed four boards vs. Cal in Pac-10 Tournament win ... Scored a season-high 15 v. Arizona.

Career Highs: Pts. 21 vs. Gonzaga, 11/24/06; Reb. 13 at Arizona State, 11/18/07; Asst. 2, last at Oregon State, 2/21/08; Stl. 3, last v. Southern, 12/2/07; Blk. 3 at Tennessee, 11/16/06.

UCLA Career Statistics

| Year | G-Gs | Min/Avg | Fg-Fga | Pct. | Ft-A | Pct. | Reb./Avg. | A | B | St | TP | Avg |
|---------------|--------------|------------------|----------------|-------------|----------------|-------------|----------------|-----------|-----------|-----------|------------|------------|
| 07-08 | 28-3 | 265/9.5 | 26-81 | .321 | 24-37 | .649 | 105/3.8 | 12 | 9 | 16 | 76 | 2.7 |
| 06-07 | 32-32 | 652/20.4 | 99-197 | .503 | 48-95 | .505 | 212/6.6 | 9 | 24 | 28 | 246 | 7.7 |
| 05-06 | 32-0 | 398/12.4 | 64-124 | .516 | 32-68 | .471 | 120/3.8 | 2 | 14 | 12 | 160 | 5.0 |
| Totals | 92-35 | 1315/14.3 | 189-402 | .470 | 104-200 | .520 | 437/4.8 | 23 | 47 | 56 | 482 | 5.2 |
| Pac-10 | 54-21 | 787/14.6 | 106-230 | .461 | 66-122 | .541 | 267/4.9 | 12 | 26 | 33 | 278 | 5.2 |

3-point Shooting: 2008: 0-0, (.000); 2007: 0-1, (.000); 2006: 0-0, (.000); Totals: 0-1, (.000).



#24 Candice Brown

Forward/Center • Sophomore • 6-4 • LaPuente, CA (Bishop Amat HS)

2007-08 — Had two starts and appeared in 26 games ... Earned starts at Oregon and Oregon State ... Scored six at Oregon ... Had seven rebounds at USC ... Scored six at San Diego and against Southern University.

Career Highs: Pts. 6, last at Oregon, 2/23/08; Reb. 7 at USC, 11/19/08; Asst. 1, last vs. Washington, 2/10/08; Stl. 2, last at Oregon, 2/23/08; Blk. 2, last vs. USC, 3/8/08.

UCLA Career Statistics

| Year | G-Gs | Min/Avg | Fg-Fga | Pct. | Ft-Att. | Pct. | Reb./Avg. | A | B | St | TP | Avg |
|--------|------|---------|--------|------|---------|------|-----------|---|----|----|----|-----|
| 07-08 | 26-2 | 239/9.2 | 16-46 | .348 | 8-21 | .381 | 58/2.2 | 6 | 10 | 10 | 40 | 1.5 |
| Pac-10 | 16-2 | 149/9.3 | 8-30 | .267 | 4-11 | .364 | 34/2.1 | 3 | 6 | 6 | 20 | 1.3 |

3-point Shooting: 2008: 0-0, (.000).

RETURNING PLAYER BIOGRAPHIES



#31 Moniquee Alexander

CENTER • JUNIOR • 6-6 • HARBOR CITY, CA (EDISON ACADEMIC CENTER)

2007-08 — Appeared in 29 games with 15 starts ... Scored seven at Washington State ... Pulled down a season-best nine boards at Washington and added six points ... Scored eight at Arizona ... Scored career-high 11 points versus UC Riverside and pulled down seven rebounds ... Also had 11 points against Tennessee ... Scored eight versus Idaho State ... Made first career start at CS Northridge and grabbed five rebounds.

2006-07 — Saw action in 31 games ... Had one double digit scoring game, with 10 points at Arizona ... Pulled down at least three boards in 14 contests ... Played at least 10 minutes in 16 games ... Had seven games with at least seven points ... Had a best overall game of 10 points and eight rebounds at Arizona ... Scored eight with six boards at Arizona State ... Scored seven and had six rebounds at home vs. Stanford ... Scored eight vs. Oklahoma ... Grabbed 10 rebounds and scored eight in her collegiate debut in the season-opener vs. UC Santa Barbara.

Career Highs: Pts. 11, last vs. UC Riverside, 12/21/07; Reb. 10 v. UCSB, 11/12/06; Asst. 2 at CS Northridge, 11/14/07; Stl. 2, last vs. Oregon, 1/24/08; Blk. 2, last vs. Stanford, 12/22/06.

UCLA Career Statistics

| Year | G-Gs | Min/Avg | Fg-Fga | Pct. | Ft-Att. | Pct. | Reb./Avg. | A | B | St | TP | Avg |
|---------------|--------------|-----------------|---------------|-------------|---------------|-------------|----------------|----------|----------|-----------|------------|------------|
| 07-08 | 30-15 | 370/12.3 | 44-104 | .423 | 27-54 | .500 | 94/3.1 | 5 | 2 | 7 | 115 | 3.8 |
| 06-07 | 31-0 | 321/10.4 | 35-93 | .376 | 28-63 | .444 | 84/2.7 | 0 | 7 | 8 | 98 | 3.2 |
| Totals | 61-15 | 691/11.3 | 79-197 | .401 | 55-117 | .470 | 178/2.9 | 5 | 9 | 15 | 213 | 3.5 |
| Pac-10 | 34-11 | 380/11.2 | 34-104 | .327 | 28-59 | .475 | 102/3.0 | 2 | 3 | 10 | 96 | 2.8 |

3-point Shooting: 2008: 0-0, (.000); 2007: 0-0, (.000); Totals: 0-0 (.000).

FRESHMEN BIOGRAPHIES

#35 Rebekah Gardner

Guard • Freshman • 5-10 • Fontana, CA (Ayala HS)

High School — Played at Ayala HS in Chino Hills, CA for coach Mel Sims ... Scored 2,301 points in her prep career ... Averaged 19.7 points, 8.1 rebounds, 3.9 steals and 3.1 assists as a senior ... Named three-time Area MVP by the Inland Daily Bulletin ... Named CIF-SS II-A Co-Player of the Year ... 2007 CIF Division II-A Player of the Year ... EA Sports second-team All-American ... Helped lead her HS team to the 2007 CIF Division II-A title ... Averaged 22.9 points, 9.1 rebounds, 4.2 steals, 2.1 assists and 1.4 blocks per game ... Earned CIF All-State as a junior and sophomore ... As a sophomore, she averaged 28.7 points, 10.6 rebounds and 2.9 assists.

#50 Atonye Nyingifa

Guard/Forward • Freshman • 5-11 • Torrance, CA (Redondo Union HS)

High School — Played at Redondo Union HS in Redondo Beach, CA for coach Marcelo Enriquez ... Scored 2,192 points in her prep career ... Averaged 21.2 points and 12.2 rebounds as a senior ... Led her team to the CIF Division I-A title ... Named CIF-SS I-A Co-Player of the Year ... Named second-team All-State by Max Preps ... As a junior, she was a first-team All-State selection by Cal-Hi Sports ... Voted the 2007 Daily Breeze South Bay Area Player of the Year ... Averaged 16.8 points, 11.0 rebounds, 2.5 steals, 2.1 assists and 1.3 blocks per game as a junior ... As a sophomore, she earned All-CIF Division-IIA Player of the Year honors ... As a Freshman, she became the youngest player ever named Daily Breeze South Bay Area Player of the Year ... CIF Division II-A Co-Player of the Year ... Won MVP honors at the 2007 End of the Trail Tournament while playing club basketball ... 2006 End of the Trail all-tournament selection in 2006.

HEAD COACH



Nikki Caldwell

Head Coach • 1st Year • Tennessee ('94)

Nikki Caldwell, recognized as one of nation's top assistant coaches during stints at the University of Tennessee and at the University of Virginia, is set to begin her first head coaching assignment at UCLA. In her 14 seasons as a collegiate player and assistant coach, her teams have compiled an amazing 404-76 record and have appeared in the NCAA Tournament in each season, while winning three NCAA Championships. Caldwell, the fifth women's basketball coach in UCLA history, played for and coached alongside legendary Pat Summitt at the University of Tennessee for all but three of those seasons. She comes to UCLA after being on staff at Tennessee for the past six seasons, including the last two which produced National Championships.

"We are thrilled to welcome Nikki to the Bruin family," said Athletic Director Dan Guerrero. "She is bright, articulate and an outstanding coach and recruiter who is a rising star in her profession. Nikki has been a winner as a student-athlete and as an assistant coach and is the perfect person to make our program nationally competitive on a regular basis."

The 36-year old Caldwell, lauded as an excellent floor coach and a consistent star among college recruiters, helped the Lady Vols capture a second-straight NCAA championship in 2008 and finished with a record of 36-2. National Player of the Year Candace Parker, the No. 1 selection in the WNBA draft, led a group of five Lady Vols to be drafted into the WNBA on the day after the championship.

Caldwell joined the Tennessee staff for the 2002-03 season and became the recruiting director in the spring of 2003. In the fall of 2003, the Tennessee staff signed perhaps the most prolific freshman class in the history of women's collegiate basketball. For the 2004-05 season, Tennessee welcomed six 2004 high school All-Americans, including three Players of the Year. In 2007, the Women's Basketball Coaches Association (WBCA) named Tennessee as the best recruiting school in the nation. In 2008, three of the top-15 high school seniors (hoopgurlz.com) in the country committed to play for the Lady Vols and five played in the McDonald's All-American Game.

Prior to her return as a coach at her alma mater, Caldwell served as an assistant at the University of Virginia for three seasons (2000-2002). She was responsible for recruiting, scouting, film exchange, player development, camps and monitoring academic progress of the student-athletes. UVA compiled a record of 60-36 in her three seasons in Charlottesville and advanced to the NCAA Tournament in each year. She helped to develop standout Atlantic Coast Conference (ACC) players Telisha Quarles at guard and forward Brandi Teamer, the 2002 ACC Rookie of the Year.

A guard during her playing days at Tennessee (1991-94) when the Lady Vols put together a 118-113 record, Caldwell was known for her tough defense and three-point shooting. She still ranks among the all-time top 10 at Tennessee in three-points field goals made (128) and three-point shots attempted (364). She scored 20 points in her first collegiate game against Stanford and went on to be named to the Southeastern Conference's (SEC) All-Freshman team. In the 1991, NCAA title game victory over Virginia, Caldwell's defense was considered a key in UT's overtime victory.

Caldwell received the Gloria Ray Leadership Award in both her junior and senior seasons at Tennessee. After graduating with a degree in public relations in 1994, Caldwell moved behind the microphone as a color analyst on Tennessee games for Fox Sports Net South. She went on to become the color analyst for the SEC's Game of the Week from 1995-97. Her television exposure opened the door for her to become the hostess of the sports segments for the Knoxville, TN-based television show, Shop at Home (1997-98). She then decided to return to her first love, coaching, in 1998 when she became a graduate assistant for administration on the Lady Vols women's basketball staff. During the 1998-99 season, Tennessee went 31-3 and captured the SEC regular season and SEC Tournament titles. Caldwell was responsible for assisting the coaching staff in all aspects of basketball operations.

A native of Oak Ridge, TN, Caldwell is single.

2007-08 SEASON BESTS

#1 Nina Earl

Minutes: 38 at Arizona, 12/30/07
 Pts: 23 at Arizona, 12/30/07
 Reb: 10 at Arizona, 12/30/07
 Assists: 4 v. Oregon St., 1/26/08
 Steals: 4, last v. USC, 3/8/08
 Blocks: 1, last v. WSU, 2/8/08

#2 Tierra Henderson

Minutes: 35 v. Arizona St., 2/28/08
 Pts: 16 v. Oregon St., 1/26/08
 Reb: 7 v. Idaho State, 12/1/07
 Assists: 7 v. Arizona, 3/1/08
 Steals: 7 at Arizona, 12/30/07
 Blocks: 1 at WSU, 1/14/08

#3 Darxia Morris

Minutes: 33 at ASU, 12/28/07
 Pts: 21 v. Cal Poly, 1/20/07
 Reb: 6 v. UCR, 12/21/07
 Assists: 5, last v. Wash., 2/10/08
 Steals: 6 at Arizona, 12/30/07
 Blocks: 1, last at Cal, 1/31/08

#4 Christina Nzekwe

Minutes: 20 at BYU, 12/15/07
 Pts: 8, last at Washington, 1/10/08
 Reb: 8 v. Cal Poly, 1/20/07
 Assists: 2, last v. Arizona, 3/1/08
 Steals: 4 at Washington, 1/10/08
 Blocks: 1, last v. Stanford 3/9/08

#10 Allison Taka

Minutes: 10 v. Southern, 12/2/07
 Pts: 1 v. Southern, 12/2/07
 Reb: n/a
 Assists: 3 at WSU, 1/4/08
 Steals: 1, last v. USC, 3/8/08
 Blocks: n/a

#13 Erica Tukiainen

Minutes: 27 at Washington, 1/10/08
 Pts: 12 at WSU, 1/14/08
 Reb: 9 at CSUN, 1/14/07
 Assists: 4, last at Arizona, 12/30/07
 Steals: 3 v. Southern, 12/2/07
 Blocks: 1, last at OSU, 2/21/08

#14 Lindsey Pluimer

Minutes: 37 v. Cal, 1/6/08
 Pts: 19, last v. Wash., 2/10/08
 Reb: 13 v. Idaho State, 12/1/07
 Assists: 4, last v. Cal, 1/6/08
 Steals: 3, v. Maryland, 1/25/07
 Blocks: 3, last at Oregon, 2/23/08

#21 Doreena Campbell

Minutes: 38, last at Wash., 1/10/08
 Pts: 15 v. Maryland, 1/25/07
 Reb: 8, last at Oregon, 2/23/08
 Assists: 8 at ASU, 12/28/07
 Steals: 7 at CSUN, 1/14/07
 Blocks: 2 v. Idaho State, 12/1/07

#23 Chinyere Ibekwe

Minutes: 18 at USC, 1/19/08
 Pts: 9 at Stanford, 2/3/08
 Reb: 9 at Cal, 1/31/08
 Assists: 2, last at OSU, 2/21/08
 Steals: 3 v. Southern, 12/2/07
 Blocks: 2 v. Oregon, 1/24/08

#24 Candice Brown

Minutes: 29 at Oregon, 2/23/08
 Pts: 6, last at Oregon, 2/23/08
 Reb: 7 at USC, 1/19/08
 Assists: 1, last v. Wash., 2/10/08
 Steals: 2, last v. USC, 3/8/08
 Blocks: 2, last v. USC, 3/8/08

#31 Moniquee Alexander

Minutes: 22 at CSUN, 1/14/07
 Pts: 11, last v. UCR, 12/21/07
 Reb: 9 at Washington, 1/10/08
 Assists: 2 at CSUN, 1/14/07
 Steals: 2 v. Oregon, 1/24/08
 Blocks: 1, last v. Cal, 1/6/08

#34 Regina Rogers

Minutes: 26 at ASU, 12/28/07
 Pts: 12, last v. Southern, 12/2/07
 Reb: 16 at Pepperdine, 1/28/07
 Ast: 2, last v. Oregon, 1/24/08
 Stls: 2, last at Pepperdine, 1/28/07
 Blocks: 3, last v. Arizona, 3/1/08

UCLA Team Highs

FG %: .533 (40-75) v. Cal Poly, 1/20/07
 FT %: .846 (22-26) v. Arizona State, 2/28/08
 3-Pointers Made: 8 v. Arizona, 3/1/08
 FG Made: 40 v. Cal Poly, 1/20/07
 FT Made: 23 v. Cal Poly, 1/20/07
 Reb: 57 v. Idaho State, 12/1/07
 Points: 107 v. Cal Poly, 1/20/07
 Assists: 22 v. Arizona, 3/1/08
 Turnovers: 27 at ASU, 12/28/07
 Steals: 18, last v. USC, 3/8/08
 Blocks: 7, last v. Arizona, 3/8/08
 Pts. at Half: 56 at WSU, 1/14/08

Opponent Team Highs

FG %: .527 (29-55) v. Maryland, 1/25/07
 FT %: .900 (18-20) v. Idaho State, 12/1/07
 3-Pts. Made: 12 v. Idaho State, 12/1/07
 FGs Made: 31, last v. Cal Poly, 1/20/07
 FT Made: 30 at Pepperdine, 1/28/07
 Reb: 48, last v. Stanford, 1/4/08
 Points: 91 at Pepperdine, 1/28/07
 Assists: 21 at Stanford, 2/3/08
 Turnovers: 29, last v. USC, 3/8/08
 Steals: 15, last v. Stanford, 3/8/08
 Blocks: 12 at Stanford, 2/3/08
 Pts. at Half: 40, last v. Arizona State, 2/28/08

UCLA Team Lows

FG %: .228 (13-57) v. USC, 2/17/08
 FT %: .353, last v. Stanford (6-17), 3/9/08
 3-Pointers Made: 0, last v. Stanford, 1/4/08
 FG Made: 13 v. USC, 2/17/08
 FT Made: 6, last v. Stanford, 3/9/08
 Reb: 27 v. Tennessee, 12/19/07
 Points: 36 v. USC, 2/17/08
 Assists: 6 at Washington, 1/10/08
 Turnovers: 11 v. Cal, 1/6/08
 Steals: 3 v. Cal, 1/6/08
 Blocks: 1, last at Cal, 1/31/08
 Pts. at Half: 12 v. USC, 2/17/08

Opponent Team Lows

FG %: .290 (18-62) v. UCR, 12/21/07
 FT %: .417 (5-12) v. Rice, 1/18/07
 3-Pts. Made: 2, last v. USC, 3/8/08
 FGs Made: 16 v. USC, 3/8/08
 FT Made: 4 v. USC, 2/17/08
 Reb: 30 v. Arizona St., 2/28/08
 Points: 49 v. USC, 2/17/08
 Assists: 7 at Washington, 1/10/08
 Turnovers: 9 v. Cal, 1/6/08
 Steals: 1 at WSU, 1/14/08
 Blocks: 0, last at Oregon, 2/23/08
 Pts. at Half: 19 v. Southern, 12/2/07

2007-08 UCLA Women's Basketball
UCLA Combined Team Statistics (Final Stats)
All games

| | | | | |
|----------------------------|----------------|--------------|--------------|----------------|
| RECORD: | OVERALL | HOME | AWAY | NEUTRAL |
| ALL GAMES..... | (16-15) | (9-5) | (5-8) | (2-2) |
| CONFERENCE..... | (10-8) | (6-3) | (4-5) | (0-0) |
| NON-CONFERENCE..... | (6-7) | (3-2) | (1-3) | (2-2) |

| ## Player | GP-GS | Min--Avg | ---TOTAL--- | | ---3-PTS--- | | ---REBOUNDS--- | | PF | FO | A | TO | Blk | Stl | Pts | Avg |
|-------------------------|-------|----------|-------------|------|-------------|------|----------------|-------|-----|-----|------|------|-----|-----|-----|------|
| | | | FG-FGA | Pct | 3FG-FGA | Pct | FT-FTA | Pct | | | | | | | | |
| 14 Pluimer, Lindsey... | 31-31 | 956 30.8 | 161-385 | .418 | 35-91 | .385 | 81-97 | .835 | 65 | 135 | 200 | 6.5 | 64 | 0 | 48 | 14.1 |
| 01 Earl, Nina..... | 31-15 | 749 24.2 | 106-251 | .422 | 7-28 | .250 | 52-96 | .542 | 33 | 72 | 105 | 3.4 | 50 | 0 | 39 | 8.7 |
| 21 Campbell, Doreena.. | 30-30 | 925 30.8 | 101-238 | .424 | 23-53 | .434 | 37-48 | .771 | 36 | 91 | 127 | 4.2 | 70 | 2 | 101 | 8.7 |
| 02 Henderson, Tierra.. | 31-10 | 747 24.1 | 95-227 | .419 | 12-54 | .222 | 35-64 | .547 | 37 | 65 | 102 | 3.3 | 62 | 0 | 58 | 7.6 |
| 03 Morris, Darxia..... | 28-12 | 558 19.9 | 82-205 | .400 | 3-17 | .176 | 42-66 | .636 | 12 | 48 | 60 | 2.1 | 70 | 2 | 66 | 7.5 |
| 34 Rogers, Regina..... | 31-15 | 493 15.9 | 78-181 | .431 | 0-0 | .000 | 39-69 | .565 | 53 | 91 | 144 | 4.6 | 98 | 7 | 17 | 6.3 |
| 13 Tukiainen, Erica.... | 31-22 | 490 15.8 | 47-135 | .348 | 16-55 | .291 | 33-44 | .750 | 20 | 44 | 64 | 2.1 | 25 | 0 | 28 | 4.6 |
| 31 Alexander, Moniquee | 30-15 | 370 12.3 | 44-104 | .423 | 0-0 | .000 | 27-54 | .500 | 41 | 53 | 94 | 3.1 | 40 | 0 | 5 | 3.8 |
| 04 Nzekwe, Christina.. | 31-0 | 392 12.6 | 30-87 | .345 | 0-2 | .000 | 34-52 | .654 | 37 | 58 | 95 | 3.1 | 37 | 0 | 12 | 3.0 |
| 23 Ibekwe, Chinyere... | 28-3 | 265 9.5 | 26-81 | .321 | 0-0 | .000 | 24-37 | .649 | 33 | 72 | 105 | 3.8 | 46 | 0 | 12 | 2.7 |
| 24 Brown, Candice..... | 26-2 | 239 9.2 | 16-46 | .348 | 0-0 | .000 | 8-21 | .381 | 15 | 43 | 58 | 2.2 | 35 | 0 | 6 | 1.5 |
| 05 Olivier, Alexis.... | 4-0 | 13 3.3 | 0-3 | .000 | 0-0 | .000 | 2-2 | 1.000 | 0 | 0 | 0 | 0.0 | 0 | 0 | 3 | 0.5 |
| 10 Taka, Allison..... | 5-0 | 28 5.6 | 0-2 | .000 | 0-1 | .000 | 1-4 | .250 | 0 | 1 | 1 | 0.2 | 1 | 0 | 6 | 0.2 |
| TEAM..... | | | | | | | | | 62 | 92 | 154 | 5.0 | 1 | | 2 | |
| <hr/> | | | | | | | | | | | | | | | | |
| Total..... | 31 | 6225 | 786-1945 | .404 | 96-301 | .319 | 415-654 | .635 | 444 | 865 | 1309 | 42.2 | 599 | 11 | 401 | 67.2 |
| Opponents..... | 31 | 6226 | 716-1876 | .382 | 183-552 | .332 | 441-613 | .719 | 397 | 839 | 1236 | 39.9 | 565 | - | 424 | 66.3 |

| TEAM STATISTICS | UCLA | OPP | DATE | OPPONENT | W/L | SCORE | ATTEND |
|-------------------------|------------------|----------|-----------|----------------------|-----|--------|--------|
| <hr/> | | | | | | | |
| SCORING..... | 2083 | 2056 | 11/14/07 | at CSU Northridge | W | 81-69 | 822 |
| Points per game..... | 67.2 | 66.3 | 11/18/07 | RICE | W | 79-71 | 786 |
| Scoring margin..... | +0.9 | - | 11/20/07 | CAL POLY | W | 107-83 | 596 |
| FIELD GOALS-ATT..... | 786-1945 | 716-1876 | 11/25/07 | MARYLAND | L | 75-79 | 1527 |
| Field goal pct..... | .404 | .382 | 11/28/07 | at Pepperdine | L | 79-91 | 398 |
| 3 POINT FG-ATT..... | 96-301 | 183-552 | 12/1/07 | vs Idaho State | L | 64-76 | 389 |
| 3-point FG pct..... | .319 | .332 | 12/2/07 | vs Southern | W | 79-52 | 114 |
| 3-pt FG made per game.. | 3.1 | 5.9 | 12/8/07 | at SAN DIEGO TOREROS | L | 57-63 | 916 |
| FREE THROWS-ATT..... | 415-654 | 441-613 | 12-15-07 | at BRIGHAM YOUNG | L | 58-68 | 655 |
| Free throw pct..... | .635 | .719 | 12/19/07 | TENNESSEE | L | 70-82 | 4003 |
| REBOUNDS..... | 1309 | 1236 | 12/21/07 | UC RIVERSIDE | W | 71-60 | 412 |
| Rebounds per game..... | 42.2 | 39.9 | *12-28-07 | at Arizona State | L | 59-62 | 3737 |
| Rebounding margin..... | +2.4 | - | *12/30/07 | at Arizona | W | 68-59 | 1260 |
| ASSISTS..... | 401 | 424 | *01/04/08 | STANFORD | W | 69-56 | 1325 |
| Assists per game..... | 12.9 | 13.7 | *01/06/08 | CALIFORNIA | LOT | 70-73 | 1173 |
| TURNOVERS..... | 586 | 614 | *1/10/08 | at Washington | W | 59-57 | 2237 |
| Turnovers per game..... | 18.9 | 19.8 | *1/12/08 | at Washington State | W | 76-56 | 512 |
| Turnover margin..... | +0.9 | - | *1/19/08 | at USC | L | 56-64 | 8545 |
| Assist/turnover ratio.. | 0.7 | 0.7 | *01/24/08 | OREGON | W | 63-59 | 667 |
| STEALS..... | 317 | 254 | *01/26/08 | OREGON STATE | W | 74-70 | 844 |
| Steals per game..... | 10.2 | 8.2 | *1/31/08 | at California | L | 53-67 | 1525 |
| BLOCKS..... | 102 | 112 | *02/02/08 | at Stanford | L | 62-75 | 4027 |
| Blocks per game..... | 3.3 | 3.6 | *02/08/08 | WSU | W | 68-56 | 679 |
| WINNING STREAK..... | 0 | - | *02/10/08 | WASHINGTON | W | 75-68 | 1853 |
| Home win streak..... | 1 | - | *02/17/08 | USC | L | 36-49 | 8013 |
| ATTENDANCE..... | 23453 | 37105 | *02/21/08 | at Oregon State | W | 55-52 | 733 |
| Home games-Avg/Game.... | 14-1675 | 13-2145 | *02/23/08 | at Oregon | L | 55-66 | 2515 |
| Neutral site-Avg/Game.. | - | 4-2306 | *02/28/08 | ARIZONA STATE | L | 67-73 | 656 |
| | | | *03/01/08 | ARIZONA | W | 80-70 | 919 |
| SCORE BY PERIODS: | 1st 2nd OT Total | | 03/08/08 | vs USC | W | 73-52 | 4402 |
| ----- | ----- | ----- | 03/09/08 | vs Stanford | L | 45-78 | 4318 |
| UCLA..... | 973 1105 | 5 - | 2083 | | | | |
| Opponents..... | 962 1086 | 8 - | 2056 | | | | |